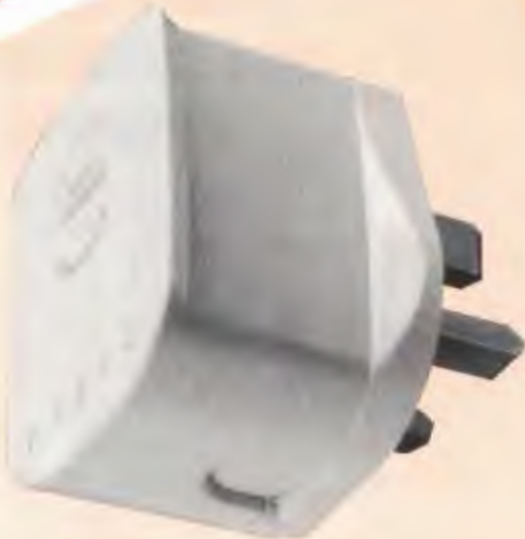
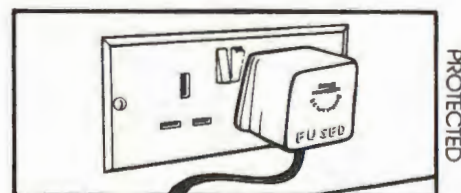
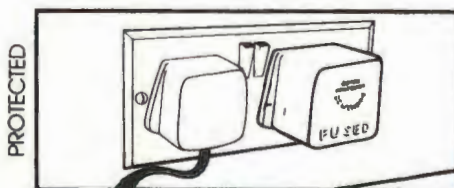




# SURGE PROTECTOR



**Safely eliminates dangerous voltage surges/spikes from domestic and professional appliances**



## WHY IS A PLUG THE IDEAL PLACE TO FIT SURGE PROTECTION ?

Transient overvoltages caused by lightning or switching surges travel in power cables at an approximate speed of 150 metres per microsecond.

The SURGE PROTECTOR PLUG operates in less than 100th of a microsecond, so this means that the optimum length of cable between plug and equipment being protected is  $\frac{150 \text{ metres}}{100} = 1.5 \text{ metres}$

The residual energy that travels past the plug is easily dealt with by other low energy protection devices contained within the equipment.

<b>CONSTRUCTION</b>	Three-element Solid State incorporated in 13 amp plug to BS1363 construction.
<b>MAX.VOLTAGE RATING</b>	250 Volts RMS.
<b>MAX.LOAD CURRENT</b>	13 AMP - uses Standard Fuses.
<b>MAX.SURGE CURRENT RATING</b>	2000 Amps
<b>RESPONSE TIME</b>	Better than 10 Nano-seconds.
<b>TOTAL ENERGY RATING</b>	150 Joules.
<b>PROTECTIVE MODE</b>	All modes L-N,L-E,N-E.
<b>POWER CONSUMPTION</b>	Negligible.
<b>PROTECTION LEVEL</b>	All surges limited to less than 25 per cent of BS1363 withstand voltage levels.
<b>FILTER FREQUENCY RESPONSE</b>	DC - 100MHZ
<b>TYPICAL ATTENUATION 2KV-10MHZ</b>	40 dB
<b>INSTALLATION</b>	Replaces standard 13 amp plug. Alternatively, place in adjacent power socket and switch on.

**REDUCES DAMAGE TO:-**

- MINI/MICRO COMPUTERS & VDU's**  
Erroneous data is produced when a surge occurs.
- HI-FI SYSTEMS**  
Sound interference also reduced.
- PRECISION INSTRUMENTATION**  
Incorrect readings and costly breakdowns.

**ELIMINATES DANGER FROM:-**

- FRIDGE FREEZERS**  
Electric Motors  
Oil Burner Igniters
- FLUORESCENT LIGHTS**  
Lightning  
Air Conditioners
- SPOT WELDERS**  
Power Network Switching  
Lifts, etc., etc., etc.

- Wired and used as an ordinary plug.
- Suitable for normal domestic voltage (220/250V)
- No power consumed except when surge is present.
- Operates instantaneously.
- Resets automatically.
- 5 amp fuse supplied.
- Maintenance free.
- Made in Britain.
- Protects when not hard wired.
- If an exceptionally severe surge occurs, the internal fuse of the SURGE PROTECTOR will safeguard your equipment.

*over 38 years  
of high performance  
in the field of protection*

All British Electricity Boards use Bowthorpe Surge Protection Equipment.

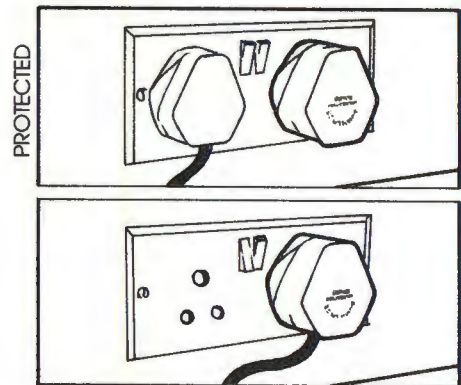
## Bowthorpe EMP

Bowthorpe EMP Ltd.  
Stevenson Road, Brighton,  
East Sussex BN2 2DF England  
Telephone: (0273) 692591  
Telex: 87357  
A member of the Bowthorpe Holdings PLC  
Group of Companies

# 15 AMP SURGE PROTECTOR



**Safely eliminates dangerous voltage surges/spikes from domestic and professional appliances**



## WHY IS A PLUG THE IDEAL PLACE TO FIT SURGE PROTECTION ?

Transient overvoltages caused by lightning or switching surges travel in power cables at an approximate speed of 150 metres per microsecond.

The SURGE PROTECTOR PLUG operates in less than 100th of a microsecond, so this means that the optimum length of cable between plug and equipment being protected is  $\frac{150 \text{ metres}}{100} = 1.5 \text{ metres}$

The residual energy that travels past the plug is easily dealt with by other low energy protection devices contained within the equipment.

CONSTRUCTION	Three-element Solid State Incorporated in 15 amp Plug to BS546A construction.
MAX. VOLTAGE RATING	250 Volts RMS.
MAX. LOAD CURRENT	15 Amps.
MAX. SURGE CURRENT RANGE	2000 Amps.
RESPONSE TIME	Better than 10 Nano-seconds.
TOTAL ENERGY RATING	150 Joules.
PROTECTIVE MODE	All models L-N, L-E, N-E.
POWER CONSUMPTION	Negligible.
PROTECTION LEVEL	All surges limited to less than 25 per cent of BS1363 withstand voltage levels.
FILTER FREQUENCY RESPONSE	DC - 100MHZ.
INSTALLATION	Replaces standard 15 amp Plug. Alternatively, place in adjacent power socket and switch on.

**REDUCES DAMAGE TO:—**

- MINI/MICRO COMPUTERS & VDU's**  
Erroneous data is produced when a surge occurs.
- HI-FI SYSTEMS**  
Sound interference also reduced.
- PRECISION INSTRUMENTATION**  
Incorrect readings and costly breakdowns.

**ELIMINATES DANGER FROM:—**

- FRIDGE FREEZERS**  
Electric Motors  
Oil Burner Igniters
- FLUORESCENT LIGHTS**  
Lightning  
Air Conditioners
- SPOT WELDERS**  
Power Network Switching  
Lifts, etc., etc., etc.

- Wired and used as an ordinary plug.
- Suitable for normal domestic voltage (220/250V)
- No power consumed except when surge is present.
- Operates instantaneously.
- Resets automatically.
- Protects when not hard wired.
- Maintenance free.

*over 38 years  
of high performance  
in the field of protection*

All British Electricity Boards use Bowthorpe Surge Protection Equipment.

## Bowthorpe EMP

Bowthorpe EMP Ltd.  
Stevenson Road, Brighton,  
East Sussex BN2 2DF England.  
Telephone (0273) 692591  
Telex: 87357  
A member of the Bowthorpe Holdings PLC  
Group of Companies